



# Installation Instructions

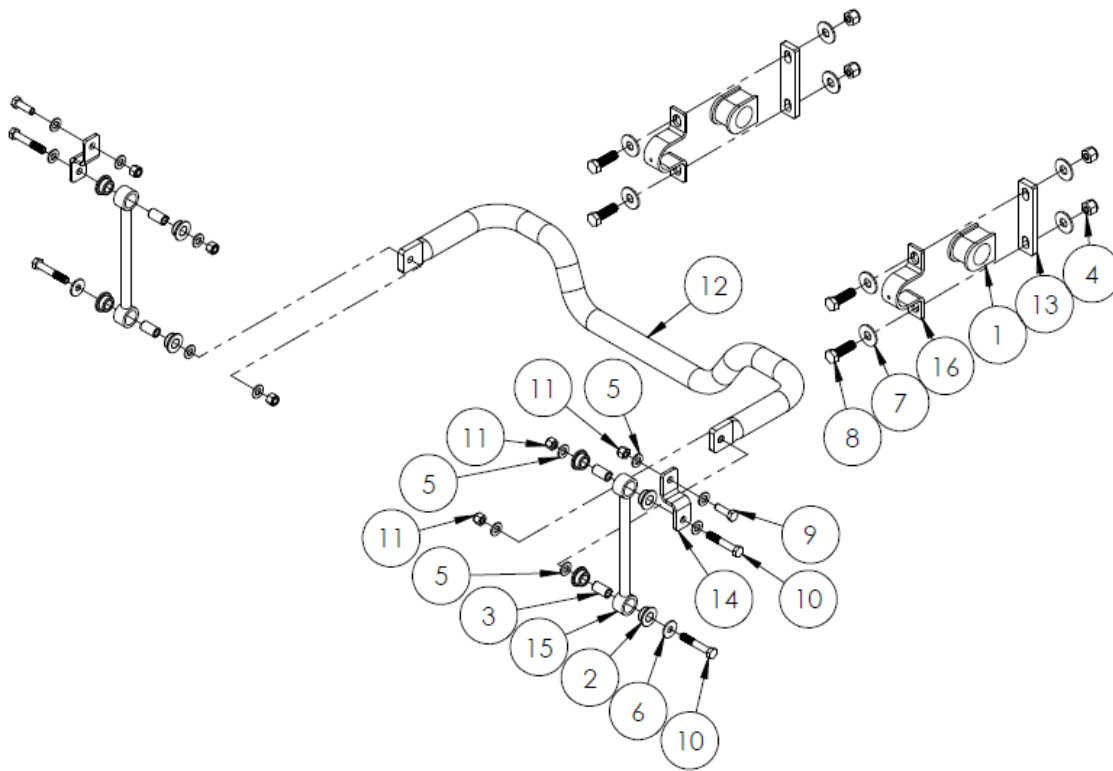
## Rear Sway Bar - Part# SS203

This part fits 2014-2020 Ford F53 V10 Chassis 20.5-26k GVWR

Thank you for purchasing this anti-sway bar kit. This kit is a replacement for the rear factory sway bar. It is tempered, 1 3/4" diameter.

A qualified mechanic using normal automotive tools and following all safety measures known, should perform installation of this product.

### SS203 REAR SWAY BAR PARTS LAYOUT



Item #	Description	Qty
1	150-404S Bushing	2
2	205223-50 Bushing	8
3	Bushing Sleeve	4
4	9/16" Nylock Nut	4
5	1/2" Small OD Flat Washer	12
6	1/2" Large OD Flat Washer	2
7	9/16" Flat Washer	8
8	9/16-12 x 2" Bolt	4
9	1/2-13 x 1 1/2" Bolt	2
10	1/2-13 x 3" Bolt	4
11	1/2" Nylock Nut	6
12	SS203 Anti-Sway Bar	1
13	B1045C Spacer	2
14	B1105 Z Bracket	2
15	B554 End Link	2
16	B1143 U-Bracket	2
17	Loctite (not shown)	1
18	Grease (not shown)	1

## Preparation

Move the coach to a level, flat surface and set the brakes or you may drive the coach over a work pit and chock the front wheels. Block off adequate space at the rear of the coach to work.

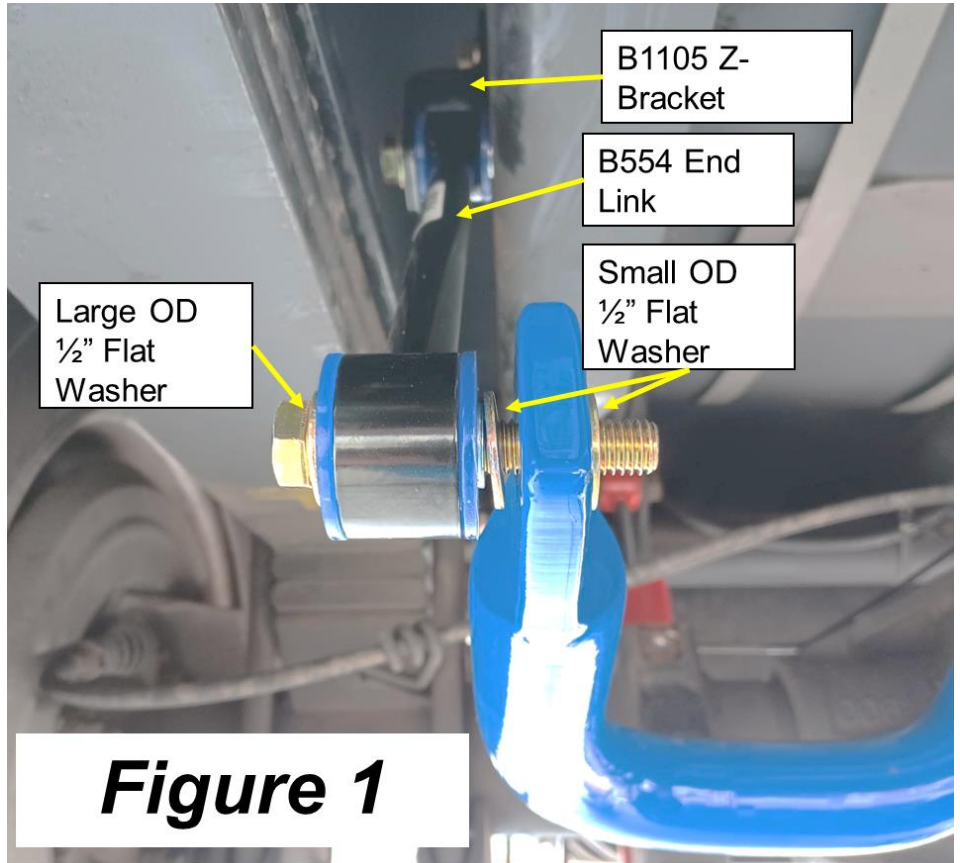
## Remove the factory rear anti-sway bar and end-links.

This kit is designed to replace the factory rear anti-sway bar. Use caution when removing the bar as it is heavy.

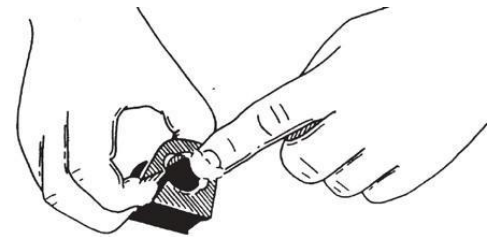
Use a hammer and chisel to remove the weldnuts from the axle bracket, where the OEM saddle brackets mounted.

Attach the **B1105 Z-Brackets (Item 14)** to the frame using the two new  $\frac{1}{2}$ " x  $1\frac{1}{2}$ " **SAE Bolts (Item 9)**, four new  $\frac{1}{2}$ " **Small OD Flat Washers (Item 5)**, and two new  $\frac{1}{2}$ " **Nylock Nuts (Item 11)**.

Attach the **B554 10.75" End-link (Item 15)** to the frame using the **Z-Brackets**, two new  $\frac{1}{2}$ " x 3" **SAE Bolts (Item 10)**, four new  $\frac{1}{2}$ " **Small OD Flat Washers**, and two new  $\frac{1}{2}$ " **Nylock Nuts** as shown in *Figure 1* at right.



Lubricate the inside of the **150-404S Bushings (Item 1)** with the provided **Grease**. Install the bushings on the **SS203 Anti-Sway Bar (Item 12)** near the arms. Slide the **B1143 U-Brackets (Item 16)** over the split bushings.



Using the other two  $\frac{1}{2}$ " x 3" SAE Bolts, two  $\frac{1}{2}$ " Large OD Flat Washers (Item 6), four  $\frac{1}{2}$ " Small OD Flat Washers, and two Nylock Nuts, loosely attach the ends of the SS203 Anti-Sway Bar to the End-links.

As shown in **Figure 1**, the bolts should face inboard with the Large OD Flat Washers between the head of the bolt and the outside of the bushing on the Endlink. The Small OD Flat Washers go between the Endlink and the Sway Bar, and between the Sway Bar and Nylock Nut (nut not shown in **Figure 1**). Make sure the dip in the bar will face away from the differential housing when installed.

Lift the Anti-Sway Bar assembly into position so that the B1143 U-Bracket holes align with the flat plate holes on the axle housing. Sandwich the B1045C Spacers (Item 13) between the U-brackets and axle housing.

Use the four 9/16" x 2" SAE Bolts (Item 8) along with eight 9/16" Flat Washers (Item 7) and 9/16" Nylock Nuts (Item 4) to fasten the sway bar to the axle.

#### **Torque the fasteners to spec**

Torque the  $\frac{1}{2}$ " Bolts to 70-80 ft-lbs. Torque the 9/16" Bolts to 100 ft-lbs.

#### **Complete installation and test drive**

Double-check all fasteners for tightness, then road test vehicle. Re-check fasteners for proper torque in 6 months.

**Please make sure to visit [SuperSteerParts.com](http://SuperSteerParts.com) and fill out your warranty registration.**

Your comments are greatly appreciated. Please feel free to contact **SuperSteer®** at 888-898-3281 or e-mail at [sales@supersteerparts.com](mailto:sales@supersteerparts.com)

**Note:** Torque values are intended as general guidelines. SuperSteer does not warrant this information to be accurate for all applications and disclaims all liability for any claims or damages which may result from its use.

⚠ **WARNING:** After road testing, re-check all fasteners for proper tightness — if a fastener has worked loose or fallen off, re-tighten or replace it. Without all kit components properly tightened or in place the anti-sway bar will not stabilize the vehicle at full capacity, which may cause reduced cornering ability or other reduction in vehicle handling or performance. **Failure to follow these instructions may result in property damage, personal injury or even death.**

⚠ **WARNING:** The SS203 Anti-Sway Bar is not a load-bearing component! Do not tow or hoist the vehicle using the anti-sway bar or its mounting brackets as attachment points. The anti-sway bar is not designed to carry the weight of the vehicle and may collapse, which will damage the anti-sway bar components, the suspension, or other components. The vehicle will detach or fall, which may cause severe personal injury. **Failure to follow these instructions may result in property damage, personal injury or even death.**

## LIMITED LIFETIME SUPERSTEER WARRANTY

### 1. WARRANTY

#### 1a. WARRANTY OF CONFORMITY AT TIME OF SALE

SUPERSTEER warrants that at the time of sale of this product it will be free from defects in material and manufacture and will conform to SUPERSTEER'S specifications for the product.

#### 1b. CONDITIONAL LIMITED LIFETIME WARRANTY

2. In addition to the preceding time-of-sale warranty, if the product registration form at <https://supersteerparts.com/warranty-registration> is completely and accurately filled out within thirty (30) days of purchase, SUPERSTEER will provide a Limited Lifetime warranty that after sale the product will remain in good working order, PROVIDED THAT the product is installed and maintained in accordance with SUPERSTEER'S instructions and is not subjected to: (a) alteration or unauthorized repairs or repairs by anyone other than a SUPERSTEER -authorized service center, (b) misuse, abuse, commercial use, or improper maintenance, (c) Acts of God (including without limitation hurricanes, tornadoes, floods, or other severe weather or natural phenomena), (d) failures due to products not supplied by SUPERSTEER, or (e) other treatments, uses, or installations for which the product was not intended. This warranty extends only to the first retail purchaser-consumer of the product and is not transferable.

### 3. DISCLAIMER OF OTHER WARRANTIES

The preceding warranties are the exclusive and sole express warranties given by SUPERSTEER. They supersede any prior, contrary or additional representations, whether oral or written. No agent, representative, dealer, or employee has the authority to alter or increase the obligations or limitations of this warranty. Any implied warranties, including the WARRANTY OF MERCHANTABILITY and any WARRANTY OF FITNESS FOR A PARTICULAR PURPOSE, are limited in duration to thirty days or the term of the applicable express warranty provided above, whichever is longer. Some states do not allow limitations on how long an implied warranty lasts, so the above limitation may not apply to you.

### 4. EXCLUSIVE REMEDY FOR ANY NONCONFORMITIES

If during the applicable Warranty Period, the product does not conform to the preceding Warranties, notify SUPERSTEER as provided below, and within a reasonable time SUPERSTEER will provide, at its option, one of the following: (1) replacement components for any nonconforming or defective product or components or (2) the percentage of the purchase price for the nonconforming product equal to the percentage of the Warranty Period remaining when SUPERSTEER is notified of the nonconformity. SUPERSTEER will, at its option, (a) use new and/or reconditioned parts in performing warranty repairs and making replacement products, (b) use parts or products of original or improved design in the repair or replacement. If SUPERSTEER repairs or replaces a product, its warranty continues for the remaining portion of the original Warranty Period or 60 days from the date of the return shipment to the customer, whichever is greater. All replaced products and all parts removed from repaired products become the property of SUPERSTEER. SUPERSTEER will not provide, and will not be liable for, labor, costs of removal or reinstallation of components, disposal, shipping, freight, taxes, or other incidental charges.

### 4. DISCLAIMER OF INCIDENTAL AND CONSEQUENTIAL DAMAGES

For any breach of warranty, the Owner must telephone SUPERSTEER at 1-888-898-3281 within thirty (30) days after discovering the nonconformity. Do not return any product without first calling SUPERSTEER and getting a return authorization number. Returned products must include the return authorization number and a copy of the original invoice, bill or other proof of the date of purchase. The date of purchase must coincide with the original warranty registration card on file. SUPERSTEER will authorize (a) shipment of the product to SUPERSTEER or (b) repair or replacement at the nearest warranty service center—in both cases with shipping at your expense. Do not purchase replacement parts or pay for repair labor—you will not be reimbursed. Compliance with the requirements of this paragraph is a condition to coverage under the Warranty: if these requirements are not complied with, SUPERSTEER will have no obligation to provide any remedy for any breach of warranty.

### 5. DISCLAIMER OF INCIDENTAL AND CONSEQUENTIAL DAMAGES

IN NO EVENT SHALL SUPERSTEER BE LIABLE FOR ANY INCIDENTAL, SPECIAL, INDIRECT OR CONSEQUENTIAL DAMAGES, WHETHER RESULTING FROM NONDELIVERY OR FROM THE USE, MISUSE OR INABILITY TO USE THE PRODUCT OR FROM DEFECTS IN THE PRODUCT.

Some states do not allow the exclusion or limitation of incidental or consequential damages, so the above limitation may not apply to you.

### 6. APPLICABLE LAW

This Warranty will be interpreted, construed, and enforced in all respects in accordance with the laws of the State of Oregon, without reference to its choice of law rules. The U.N. Convention on Contracts for the International Sale of Goods will not apply to this Warranty.

### 7. SEVERABILITY

If any provision of this warranty is found to be invalid or unenforceable, then the remainder shall have full force and effect, and the invalid provision shall be partially enforced to the maximum extent permitted by law to effectuate the purpose of the agreement.

### 8. ADDRESS FOR NOTICES TO SUPERSTEER

SuperSteer, 458 Redwood Hwy, Grants Pass Oregon 97527

This warranty gives you specific legal rights, and you may also have other rights which vary from State to State.